

## CORIOgrapher (v2.7.3.2)

This software is for:

- Hardware: CORIOmaster™ (C3-540), CORIOmaster™ mini (C3-510), CORIOmaster™ micro (C3-503), & CORIOview.
  - Firmware [CORIOmaster] : M404 or later
  - Firmware [CORIOview] : M405\_66 or later
    - use CORIODiscover V1.6.2.1 to update to this firmware.
  - Software: CORIOgrapher v2.7
- ✔ For help with connecting, setting up, and using CORIOgrapher, see CORIOgrapher Help, or the Quick Start Guide that came in the box.

## Downloads

Download the latest firmware here: [tvone.com/firmware-updates](http://tvone.com/firmware-updates)

Download the latest control software here:

CORIOgrapher: [tvone.crmdesk.com/answer.aspx?aid=20766](http://tvone.crmdesk.com/answer.aspx?aid=20766)

CORIODiscover: [tvone.crmdesk.com/answer.aspx?aid=21697](http://tvone.crmdesk.com/answer.aspx?aid=21697)

## Previous releases

Read details on previous releases here:

[tvone.crmdesk.com/image.aspx?mode=file&id=14137](http://tvone.crmdesk.com/image.aspx?mode=file&id=14137)

## Contact us

[www.tvone.com](http://www.tvone.com)

tvONE NCSA  
North, Central and South America

✉ Sales: [sales@tvone.com](mailto:sales@tvone.com)  
Support: [tech.usa@tvone.com](mailto:tech.usa@tvone.com)

tvONE EMEA  
Europe, Middle East, Africa and Asia Pacific

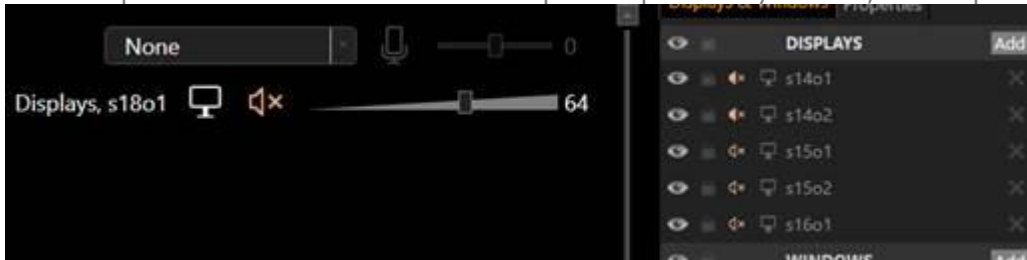
✉ Sales: [sales.europe@tvone.com](mailto:sales.europe@tvone.com)  
Support: [tech.europe@tvone.com](mailto:tech.europe@tvone.com)

# Jan 2019 CORIOgrapher (v2.7.3.2)

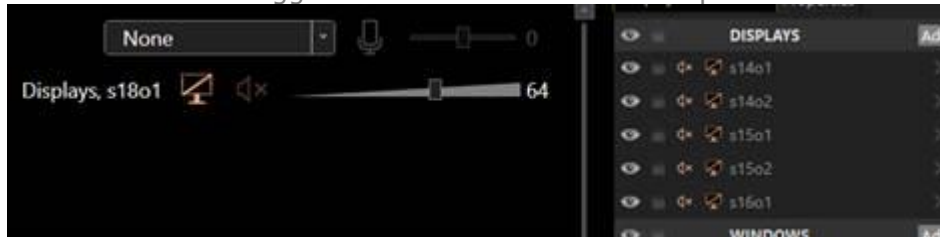
Released by: Neil Baptiste

## New Features

- Wall Editor : Canvas audio mute override for output mute icons.
  - When canvas is muted show outputs as muted, hollow speaker.
  - Update icon to show that the output is specifically muted, filled speaker.



- Wall Editor: Cut-To-Black from the display list and output bar.
  - New cut-to-black toggle buttons for canvas and outputs.



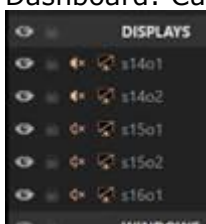
- Moved Dashboard cut-to-black to output bar so it is now on the Dashboard and Wall Editor in the same place.



- Tweak to cut-to-black and emergency cut-all-to-black icons to make them clearer.



- Dashboard: Cut-to-black muting override for output mute icon.

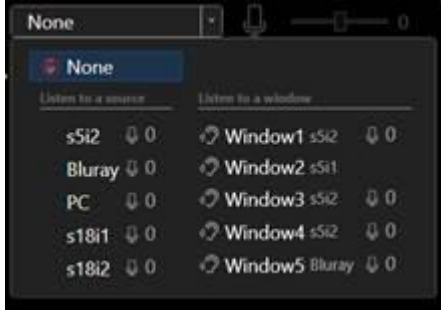


- Offline Configuration Editor value for Preset Easing now defaults to on.

**General**



- Update canvas audio selection to be two columns instead of one long list.



## Fixed

- Issue with incorrect minimum supported API version when connecting to a CORIOview.
- Wheel mouse scrolling does not work on CG Home page Discovered Devices or Recent Configurations lists.
- Time and Networking Secure connection setting are editable when connected to a CORIOview without an RTC.
  - Now covers the 3 cases where there is: No Time menu, Time menu without RTC, and Time menu with RTC.
- CORIOgrapher will only connect to the CORIOmaster range firmware versions M406\_0M or newer.
- Updated Offline Configuration Editor:
  - Profiles for CORIOmaster metadata to match M406\_0M.
  - Profile for CORIOview metadata to match M405\_66.
- Default resolution list Origin property to match M406\_0M.
- Added canvas number to Wall Editor canvas selection items, as it is missing from the Wall Editor.



- Mismatch of AudioMute symbol and AudioMute status.
- Preset button remained dark blue.



## Notes

### Known Issues:

- Canvas Cut-to-black will overwrite the current output cut-to-black and canvas audio mute values. The hope is to have this behavior supported by the firmware in a post 406 release, so the current values can be maintained.