

CORIOgrapher (v3.3.3.1)

Released by: Neil Baptiste

15-Feb-22

This software is for:

- Hardware: CORIOmaster2™ (CM2-547), CORIOmaster™ (C3-540), CORIOmaster™ mini (C3-510), CORIOmaster™ micro (C3-503), and CORIOview.
 - Firmware [CORIOmaster2] : G502 or later
 - Firmware [CORIOmaster] : M411 or later
 - Firmware [CORIOview] : M409 or later
 - use CORIODiscover V1.7.2.3 or later to update to this firmware.
 - Software: CORIOgrapher v3.3.3.1
- ✔ For help with connecting, setting up, and using CORIOgrapher, see CORIOgrapher Help, or the Quick Start Guide that came in the box.

Downloads

Download the latest firmware here: tvone.com/firmware-updates

Download the latest control software here:

CORIOgrapher: <https://tvone.com/tech-support/software>

CORIODiscover: <https://tvone.com/tech-support/software>

Previous releases

Read details on previous releases here:

<https://tvone.com/tech-support/software>

Contact us

www.tvone.com

tvONE NCSA
North, Central and South America

✉ Sales: sales@tvone.com
Support: tech.usa@tvone.com

tvONE EMEA
Europe, Middle East, Africa and Asia Pacific

✉ Sales: sales.europe@tvone.com
Support: tech.europe@tvone.com

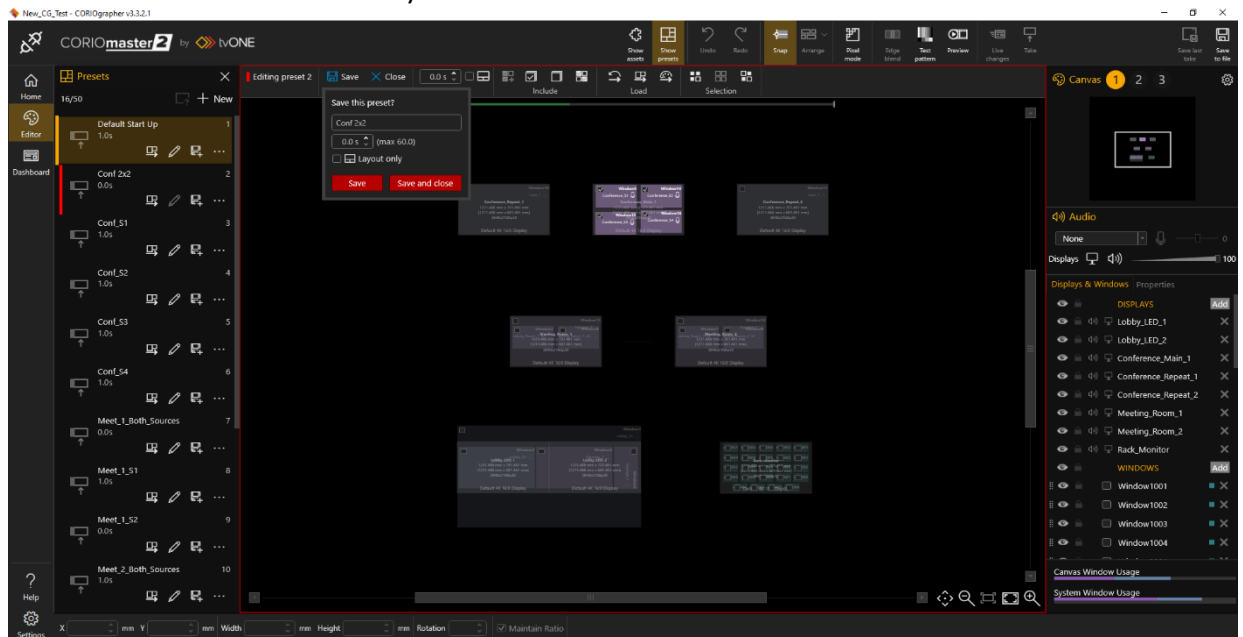
CORIOgrapher (v3.3.3.1)

Released by: Neil Baptiste

15-Feb-22

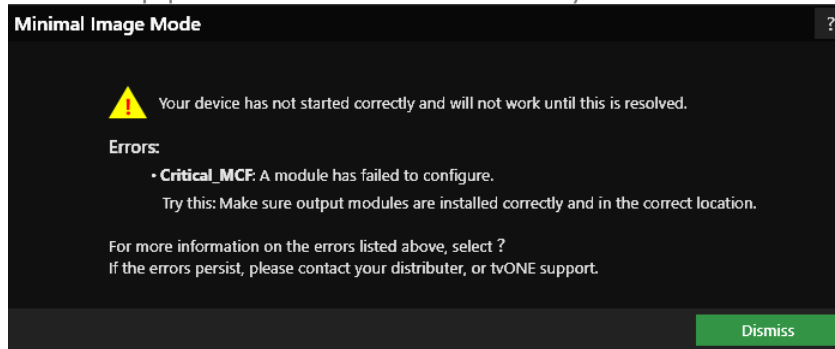
[New Features for CORIOmaster variants with FW M411 and above and CORIOmaster2 with FW G502 or above only]

- Support for the new CM-HDMI-4K-SC-2OUT(-FF) card (CORIOmaster Only).
- New Cloning feature for the new CM-HDMI-4K-SC-2OUT(-FF) card (CORIOmaster Only).
- Updated custom resolution support for DVI, HDMI 4K 1-Out and HDBaseT output module (CORIOmaster Only).
 - Updated DVI and HDBaseT outputs to allow for HActive of up to and including 2016.
 - Updated HDMI 4K 1-Out to check that HActive is at least multiple of 2 when the PixelClock is more than 162MHz and up to 297MHz.
 - Added the Multiple of 2 rule to the C3 resolution editor.
- Deleting windows used in storyboards.
- Update "missing preset analyser" to mention preset editing.
 - Updated Editor > Presets > load preset button tooltip when button is disabled when preset editing.
- Edit preset in the preset editor.
 - If the 'missing window analyser' was previously on it will be reenabled, but will not prompt
- Add tool-tip to CM2 OCE to suggest output fill order for better cooling
 - Match the resolution filtering to what is specified in the AC
- Updated device save button.
- Include presets actions in the undo redo events.
- New Preset editor functionality:



* Please read the manual for the full instructions on using the new **Preset Editor** functionality.

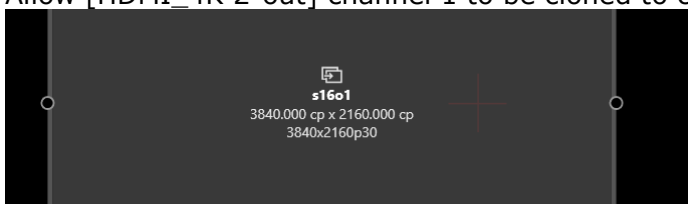
- Added critical temperature & Backplane Pwr good monitoring loop (CM2-547 only).
 - Added new minimal image dialog that will display all system alerts when the device boots into minimal image mode.
 - Display a message and fix, where possible, for each error.
 - Added help permanent redirect links for System.Alerts.



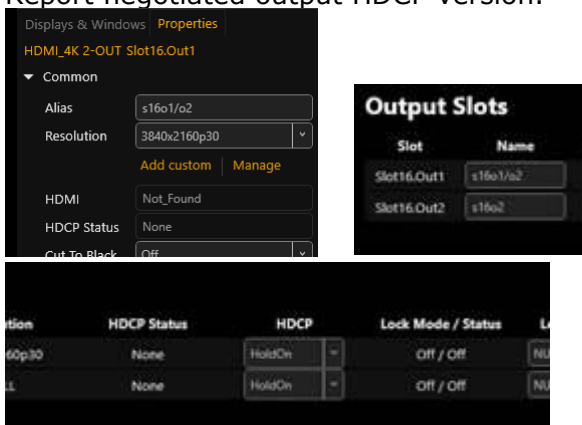
- Change source directly from window item.



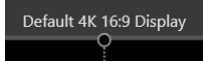
- Add [HDMI_4K 2-out] module to supported modules list for CORIOmaster C3 and CORIOview families.
- Allow [HDMI_4K 2-out] channel 1 to be cloned to channel 2.



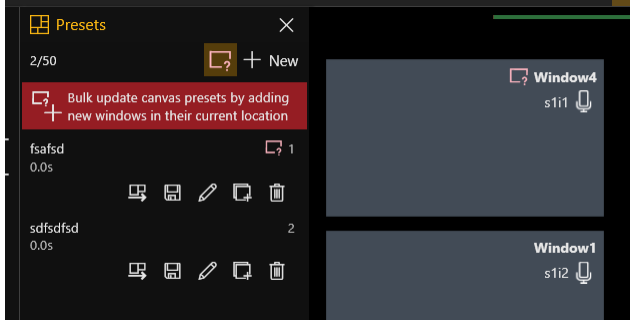
- Support [HDMI_4K 2-out] either 1 channel 4K60 or 2 channel up to 4K30.
- Report negotiated output HDCP version.



- Clean up default equipment names



- Update canvas frame rate filtering to only accept whole or video optimized resolutions.
- [Indicate and] fix existing presets if new windows have been added to a canvas
From Editor > Presets panel > added toggle button to enable preset window analyser



Fixed

- 4K4IN does not support 1080p @ 100/120Hz
 - Add the new 1080p100/119.88/120 resolutions to the supported resolutions for the 4k 4-In module. These can now be used offline.
- Window added to preset not removed properly after "undo".
- In editor res 4k60 port1 and port2 can be on the canvas at the same time when undo resolution change on port1
- CORIOgrapher should default AVIP media file duration to 0
 - Default for videos is now 0 duration (play to end)
 - CG will now set the actual duration of the clip when inserted, or edited, in the new metadata field
- Usability Issue: RTSP Multicast message displayed for media items on the USB and Internal Drive
- Media duration cannot be edited from playlist if file name is too long.
- 4:3 Default equipment uses resolution not supported by HDMI cards.
- 4k2out: ch2 resolution stays at 1080p60 despite placing the Display on Canvas with default res of 4k30
- Cloned output alias (19 char) overlaps the auto alias in asset list
- 4K2OUT: Modline data for 3840x2160p50 is incorrect
 - Corrected FW cached 3840x2160p50 for CM and CM2.
- Offline Configuration Editor: Window resolution always shows NULL when first added to canvas.
- Offline Configuration Editor Canvas bandwidth meter does not update when window resolution changed.
- Crash after creating offline config if you then go to the Dashboard and then back to Editor.
- 'Load the canvas windows to the preset editor' does not reflect current window location if "Live Changes = ON"
- Offline CORIOmaster2 config detected as incompatible when loaded to a connected device.
- Dedicated windows missing after loading a config.

Notes

Known Issues:

- If you are installing CORIOgrapher v3.2 and already have CORIOgrapher v2.9 installed, then double clicking a CMC config file may still open in v2.9. If the CMC files do not automatically register to v3.2 you can change this by right clicking the file, selecting Open with..., and then choosing CORIOgrapher v3.2 from the list.
- Encoder Manager dialog uses tabs and the tab default behavior changes the selected tab highlight when the mouse hovers over child items.
- Application Window title bar is not themed.
- Changing pixel clock on an active custom resolution has no effect.
- Canvas Cut-to-black will overwrite the current output cut-to-black and canvas audio mute values, which means the previous values cannot be restored.