

CORIOgrapher™ (v3.0.2.7)

Released by Neil Baptiste
11/08/20

This software is for:

- Hardware: CORIOmaster2™ (CM2-547).
- Firmware [CORIOmaster2™] M500 or later
 - use CORIOdiscover v1.7.2.3 or later to update to this firmware
- Software: CORIOgrapher v3.0

- ✔ For help with connecting, setting up, and using CORIOgrapher, see CORIOgrapher Help, or the Quick Start Guide that came in the box.

Downloads

Download the latest firmware here:

tvone.com/firmware-updates

Download the latest versions of CORIOgrapher and CORIOdiscover here:

<https://tvone.com/tech-support/software>

Previous releases

None

Contact us

www.tvone.com

tvONE NCSA
North, Central and South America

✉ Sales: sales@tvone.com
Support: tech.usa@tvone.com

tvONE EMEA
Europe, Middle East, Africa and Asia Pacific

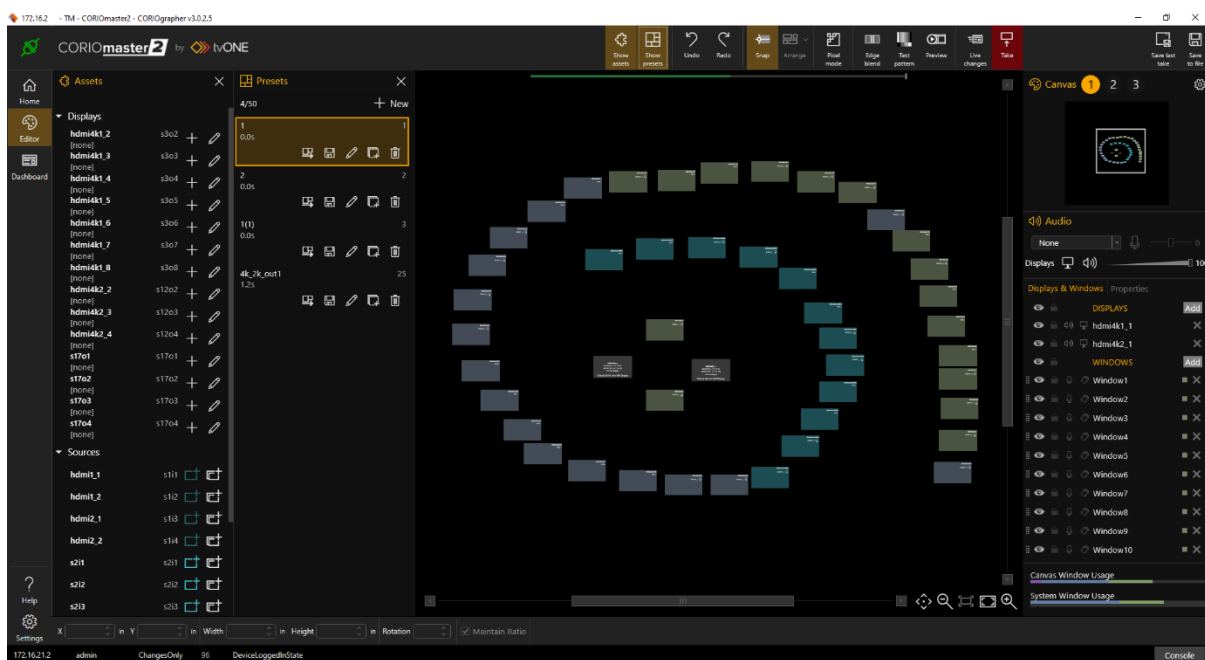
✉ Sales: sales.europe@tvone.com
Support: tech.europe@tvone.com

CORIOgrapher™ (v3.0.2.7)

Released by Neil Baptiste
11/08/20

New Features & Functions for CORIOmaster2 M500_00 and above only

New canvas editor and layout:



- There are a lot of great new UI improvements and enhancements in this new CORIOgrapher release, for a full description please read the instruction manual or the Online help "?" from CORIOgrapher v3.0

Fixed

- CORIOgrapher v3.0 cannot set the network time.

Notes

Known issues:

- User is able to select all resolutions on AVIP (Media card) channel 2, only 1080p60 is supported.
- Sending settings from CORIOgrapher 3.0 Target slows down over time if the console window is open.
- Encoder Manager dialog uses tabs and the tab default behaviour changes the selected tab highlight when the mouse is over child items.
- Third-party ColorPicker control is difficult to customise so the Advanced section has some dark text on a dark background.
- Application Window title bar is not themed, will do at some point just takes a bit of time to duplicate the existing look and behaviour correctly.
- Canvas Cut-to-black will overwrite the current output cut-to-black and canvas audio mute values. The hope is to have this behaviour supported by the firmware in a later release, so the current values can be maintained.