

# 1T-C2-750



## Dual Window Switcher Scaler PLUS



The 1T-C2-750 Scaler PLUS is the perfect 1080p solution, offering high quality scaling and superior switching in a compact, cost effective format. Dual CORIO scalars can also be used for flexible picture-in-picture, keying and format conversion.

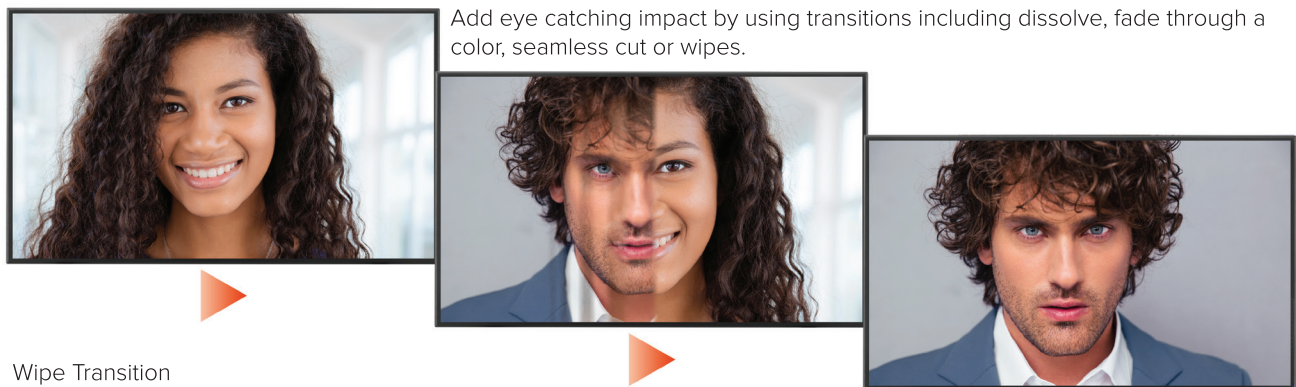
- Dual inputs for DVI-I, HDMI or VGA
- HDMI support including audio & EDID management
- Two high quality CORIO scaling engines for up/down/cross conversion
- Single or dual picture-in-picture
- Two still image stores for graphics & logos
- Zoom to 10x, shrink to 10% with pixel accuracy
- Borders with transparency
- Chromakey and Lumakey
- Transitions include dissolve, fade through black, seamless cut or wipes
- 50 user definable presets
- Front panel with OSD or 3rd party control

### Dual Picture-In-Picture

Dual picture-in-picture is a simple way to boost collaboration with the option to add borders and color background fields. Switch between sources and presets using front panel control.



### Seamless Switching



### User Definable Preset Examples



## DVI Adapters

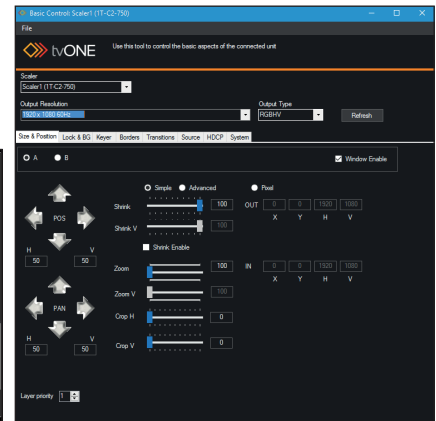
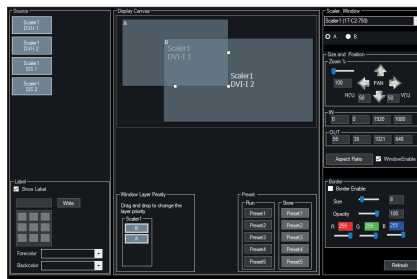
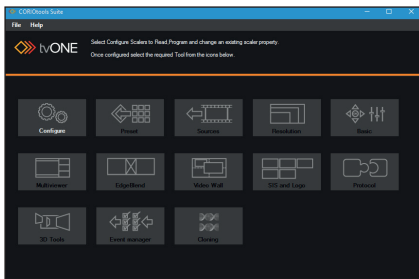


## Companion Products



## Software

CORIOtools Suite PC software allows you control one or more 1T-C2-750's including adjustment of presets, macros, resolutions, source selection, still image upload and PIP control as well as providing full back up and restore features.



## Specifications

<b>Inputs</b>	
Signal Type	2x DVI-I via DVI-I Connector
Digital DVI-D Format:	
Max HD Resolution	1080p@60Hz
Max PC Resolution	1920x1200@60Hz
Analog DVI-A Format:	
Max HDTV Resolution	1080p@60Hz
Max PC Resolution	2048x2048
Max Horiz Scan Rate	150KHz
Signal Format	RGBHV, RGBS, RGsB, YPbPr
Sync	TTL Level, 10KΩ, Pos or Neg
Termination	75Ω
R-G-B Level Range	0.5-2.0 Vp-p
Scan Rate Detection	Automatic
<b>Output</b>	
Signal Type	1x DVI-I via DVI-I Connector
Digital DVI-D Format:	
Max HD Resolution	1080p@60Hz
Max PC Resolution	1920x1200@60Hz
Analog DVI-A Format:	
Max HDTV Resolution	1080p@60Hz
Max PC Resolution	2048x2048
Vertical Refresh Rate	Any to 250Hz
Signal Format	RGBHV, RGBS, RGsB, YPbPr
R-G-B Level	0.7 Vp-p
<b>General</b>	
System Latency	1 to 2 frames delay
Size and Position	Automatic via AutoSet or Manual
Image Size	User-Definable Presets
Image Freeze	One Video Frame
Settings Memory	Non-Volatile
Zoom Range	Variable to 10X Zoom
Shrink Range	Variable to 10%
Image Mirroring	Horizontal and/or Vertical
Horizontal Filtering	Full Digital
Conversion Technology	Proprietary – CORIO®2

Frame Rate Conversion	Frame add/drop
Color Resolution	24-bit (16.8 Million Colors)
Sampling Rate	162MHz
Digital Sampling	24-bit, 4:4:4 format
Firmware Memory	Flash, Upgradeable via RS-232
Analog Video Adjust	R-G-B Levels Contrast, Phase
<b>Control Methods</b>	
Local	via Front Panel Buttons & OSD
RS-232 Interface	via D9 Female Connector
Infrared Remote	via IRC-5 Remote Unit
<b>Warranty</b>	
Limited Warranty	5 Years Parts and Labor
<b>Regulatory Compliance</b>	
Main Units	FCC, CE, RoHS
Power Supplies	UL, CUL, CE, PSE, GS, RoHS
<b>Mechanical</b>	
Size (H-W-D)	30x200x90mm (1.18"x7.87"x3.54")
Weight (Net)	0.52 kg (1.14 lbs)
<b>Environmental</b>	
Operating Temperature	0° to +40° C (+32° to +104° F)
Operating Humidity	10% to 85%, Non-condensing
Storage Temperature	-10° to +70° C (+14° to +158° F)
Storage Humidity	10% to 85%, Non-condensing
<b>Power Requirement</b>	
External Power Supply	12VDC@1A
<b>Accessories Included</b>	
1x Operations Manual	1T-C2-750
1x Power Adapter	Universal PSU
<b>Product Item Numbers</b>	
1T-C2-750	Dual-PIP DVI-I Scaler
<b>Optional Accessories</b>	
CMD1941	DVI Male to HDMI Female
RM-230	Single/Dual Rackmount Kit
ZDH-2038	DVI Male to 5-BNC Female
ZDH-2040	DVI Male to VGA Female