



# Encoder-100 Streaming Media Encoder

Quick Start Guide V1.20

QSG-ENCODER-100-US-V1.20

Mar 2019



## In this guide

About your Encoder-100 .....	2
Quick start .....	3
CORIOgrapher™ can't find or connect to my Encoder-100 .....	10
Regulatory compliance .....	12
Contact us .....	12

Thanks for buying this Encoder-100 from tvONE.

The Encoder-100 streaming media encoder allows you to stream high quality video and audio from a range of sources to the Dual stream input module of your CORIOmaster™, CORIOmaster mini™, or CORIOmaster micro™.

## Features

- Convert video and audio to high quality digital stream.
- High quality, low bandwidth encoding with H.264 compression.
- Full 1080p HD support at up to 60 frames per second.
- Single channel encoder.
- Supports streams with low latency.
- Supports unicast and multicast streaming.
- HDMI video and audio input and output.
- Analog audio input and output.
- Preview your video signal and stream separately.

## Recommendations

- For best results, use Gb Ethernet cables and equipment.
- In industrial environments, use shielded Ethernet cables. Shielded Ethernet cables are often marked F/UTP or FTP.

# About your Encoder-100

## Encoder-100 rear panel



DC 5V	Connect to an electrical outlet
LAN	Sends encoded signal to your network Connect to your network with Ethernet
PREVIEW	Allows you to preview your encoded signal Connect to a display with a VGA cable
HDMI OUT	Allows you to preview your encoded signal Connect to a display with an HDMI cable
HDMI IN	Receives video and digital audio signal from a source Connect to a source with an HDMI cable
AUDIO OUT	Allows you to preview your audio signal Connect a speaker with a 3.5 mm jack audio cable
AUDIO IN	Receives analog audio from a source Connect a 3.5 mm jack audio cable

# Quick start



It's easy to get started with the Encoder-100, but if you want more help with any of these steps, select **?** in CORIOgrapher™ and search, or ask a question.



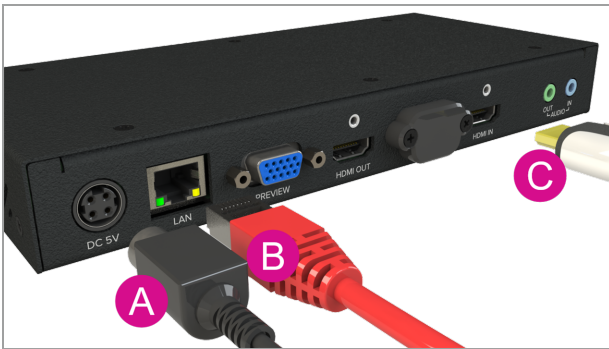
The Encoder-100 cannot encode HDCP encoded sources.

## Before you start

To use an Encoder-100, you must have a Dual stream input module installed in your CORIOmaster™, CORIOmaster mini™, or CORIOmaster micro™.

## Setting up the Encoder-100

Connect your cables.

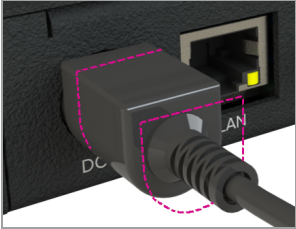


- A. Connect the power supply to an electrical outlet.
- B. Connect an Ethernet cable to a DHCP-enabled network, or, connect an Ethernet cable directly to a DHCP-enabled PC.
- C. Connect an HDMI™ cable to the video source that you wish to stream.

For example, you could connect a camera, an endoscope, or a media player.

- OPTIONAL: if you want to stream analog audio, or preview your audio, connect a 3.5 mm jack audio cable.
- OPTIONAL: if you want to see a preview of your stream, connect a VGA cable to PREVIEW, or an HDMI cable to HDMI OUT, and to a display.


**!**



The power connector is a latching power connector. To remove the power connector from your Encoder-100, slide the sleeve backward.

## Configuring the Encoder-100 with CORIOgrapher

**!** The Encoder-100 uses DHCP. Before you configure your Encoder-100, make sure DHCP is enabled on your PC.

1. Open CORIOgrapher , connect to your CORIOmaster, and read the configuration from your device.

**Connect to Device**

Successfully logged into the device

You now have the following options:

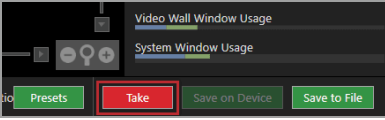
<b>Read</b>	Read Configuration from device
<b>Send</b>	Send offline Configuration to device
<b>Connect</b>	Just Connect to device (only Read system settings)

Send

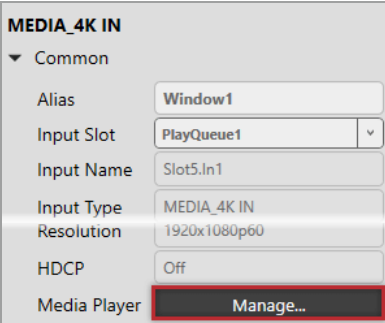
Read

Connect

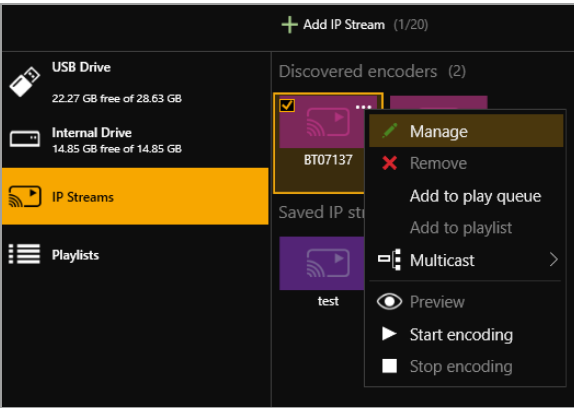
2. Set up a video wall that includes at least one window playing the Dual stream input module, and select Take.



3. Double-click the window you wish to play streaming media, and select (Media Player) Manage.



4. Select IP Streams, select your Encoder-100, and select Manage.



- When you first connect, your Encoder-100 is named with its Device ID. Find the Device ID on the bottom of your



## Encoder-100.

- If your Encoder-100 isn't displayed, select Find and enter the URL of your Encoder-100.
- If you can't find or connect to your Encoder-100, read troubleshooting advice on page 10.

### 5. Select System, and name your Encoder-100.

Names can be up to 62 characters long, and can't be blank.

The screenshot shows a dialog box titled "Manage encoder [My\_Encoder100] - Encoding". On the left is a vertical sidebar with tabs: Status, Capture, Encode, Stream, Network, and System. The "System" tab is selected. The main area is titled "System:" and contains the following fields and controls:

- Name:
- Serial number:
- Version:
- Reboot:

At the bottom of the dialog are "Apply" and "Close" buttons.

### 6. Select Network, and choose network settings for your Encoder-100.

The screenshot shows the same dialog box, but with the "Network" tab selected in the sidebar. The main area is titled "Network" and contains the following fields and controls:

- Configuration:
- IP Address:  ·  ·  ·
- Subnet Mask:  ·  ·  ·
- Default Gateway:  ·  ·  ·
- MAC Address:

At the bottom of the dialog are "Apply" and "Close" buttons.

- If you choose DHCP, the network assigns you an IP address.
- If you choose a static IP address, enter a value for your IP address, subnet mask, and gateway.

If you need help with network settings, contact your network administrator.

#### Static IP address



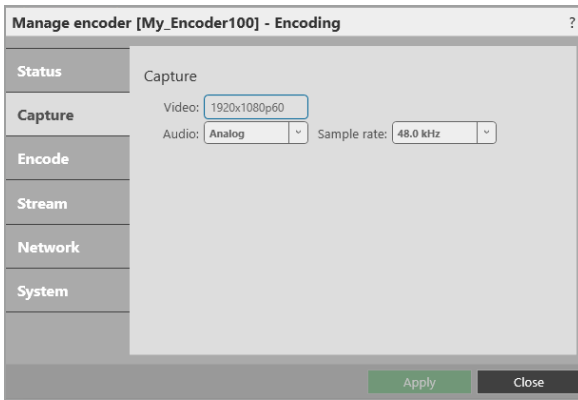
If you choose a static IP address, make sure you enter a unique value for your IP address. Using the same IP address for multiple devices can cause your devices to disconnect. Contact your network administrator for help.

### 7. Select Capture, and check that your audio source is correct.



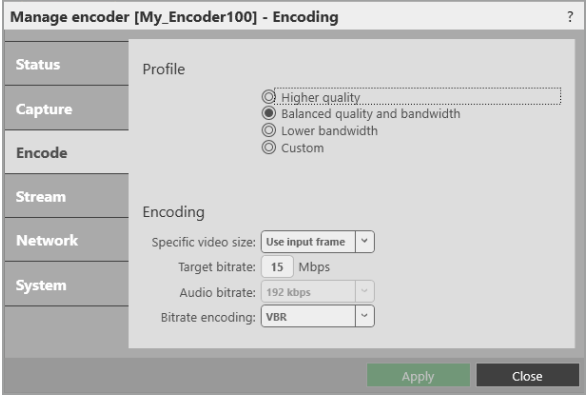
#### Risk of delayed signal

If your HDMI™ video doesn't contain embedded audio, select None or Analog from Audio.

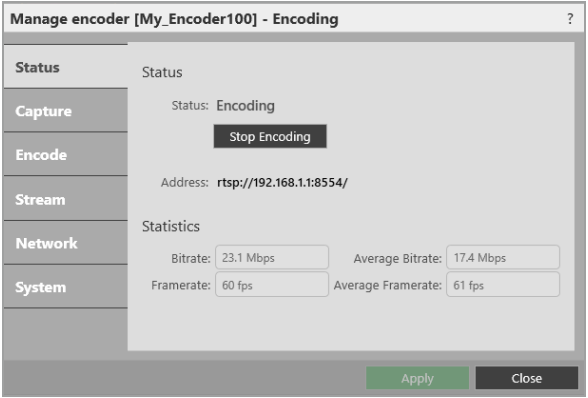


8. Select **Encode**, and choose a profile.

The profile you choose depends on the bandwidth of your connection and your quality requirements. The default settings produce a high quality stream.



9. Select **Status > Start encoding**.



Read more about configuring encoders in [CORIOgrapher Help](#).

## Playing streaming media

Select IP Streams and drag the stream from your Encoder-100 into the play queue. Use the playback controls to play your media.



Read more about playing streaming media in CORIOgrapher Help.

# CORIOgrapher™ can't find or connect to my Encoder-100

## What's the problem?

1. I tried to find my Encoder-100 in Media Browser > IP Streams, but it wasn't in the list. I tried to add it manually with an IP address, but that didn't work either.
2. I can see my Encoder-100, but can't connect to it, or stream media.

## Why does this happen?

- Your Encoder-100 might not be on the same network as the PC running CORIOgrapher. For example, the Encoder-100 is set to use DHCP and the PC has a static address in a different IP range, or they are on separate physical networks.
- Your Encoder-100 is behind a router that does not allow UPnP (Universal Plug and Play) or API commands to pass through.

## What to do

### First try this

1. Restore the factory default settings of the Encoder-100.  
Read about restoring factory default settings on page 1.
2. Change the network settings of the PC running CORIOgrapher so that it uses DHCP.
3. Check that the PC running CORIOgrapher and your Encoder-100 are on the same physical network.

### Then try this

If the PC running CORIOgrapher and your Encoder-100 are on different physical networks deliberately, for example, if you have a dedicated video network, then follow these steps:

1. Put the Encoder-100 and the PC running CORIOgrapher on the same network temporarily, and configure the Encoder-100.

Configure the Encoder-100 with a static IP address.

Read about configuring your Encoder-100 on page 1.

2. Write down the IP address of the stream.
3. Return the Encoder-100 and the PC running CORIOgrapher to their original networks.
4. Manually add an IP stream with the IP address you wrote down in step 2.

Read about manually adding streams on page 1.

### **If that doesn't work**

Check that your network settings are correct.

For more help, contact your network administrator.

If the advice here doesn't work, first contact your distributor. If your distributor can't help, contact tvONE support at [tech.usa@tvone.com](mailto:tech.usa@tvone.com), [tech.europe@tvone.com](mailto:tech.europe@tvone.com) or [tech.asia@tvone.com](mailto:tech.asia@tvone.com).

## Regulatory compliance

This product has been tested for compliance with appropriate FCC and CE rules and regulations. The power adapter and supply has been tested for compliance with appropriate UL, CUL, CE, PSE, GS, rules, regulations and/or guidelines. This product and its power adapter is RoHS compliant.

## Contact us

 [tvone.com](http://tvone.com)

 [info@tvone.com](mailto:info@tvone.com)

 **Support NCSA:** [tech.usa@tvone.com](mailto:tech.usa@tvone.com)

 **Support EMEA:** [tech.europe@tvone.com](mailto:tech.europe@tvone.com)

 **Support Asia:** [tech.asia@tvone.com](mailto:tech.asia@tvone.com)

Information in this document is subject to change without notice. No part of this publication may be reproduced, stored in a retrieval system, or transmitted in any form or any means electronic or mechanical, including photocopying and recording for any purpose other than the purchaser's personal use without the written permission of tvONE.

Copyright © 2019 tvONE™. All rights reserved.

Registered in the U.S. Patent and Trademark Office.

# CAPTIVATE your AUDIENCE



The  
best technology  
for creating  
eye-catching  
visual experiences

 tvONE

We Engineer Confidence