



# 1RK-FAN ONErack fan cover

Installation Guide V1.20

MNL-1RK-FAN-V1.20

Mar 2019

## In this guide

In the box .....	1
Powering the fan cover .....	1
Connecting the power to an internal power supply .....	2
Fitting the fan cover to the chassis .....	3
Adjusting the speed of the fans .....	4
Reversing the fans .....	4
Contact us .....	5

## In the box

1 Fan cover



1 50 cm (20 inch) power cable with connectors



In the unlikely event that a component is missing or damaged, please contact [tech.usa@tvone.com](mailto:tech.usa@tvone.com) or [tech.europe@tvone.com](mailto:tech.europe@tvone.com).

## Powering the fan cover

You can power the fan cover with an internal power supply, or with an external power supply. Both types of power supply can be purchased separately.

### Part numbers

Internal power supply: 1RK-4/5/6RU-PSU

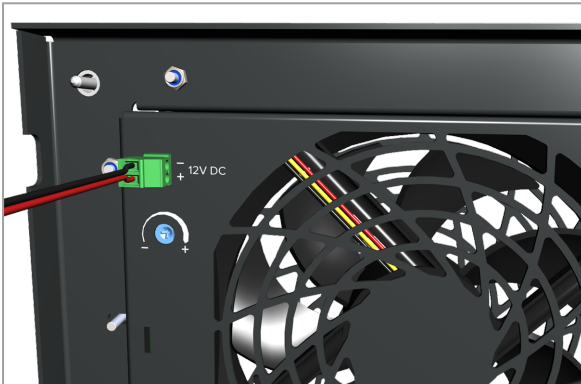
External power supply: 1RK-FAN-PSU

## Connecting the power to an internal power supply

1. Connect the power cable to the front of the internal power supply.



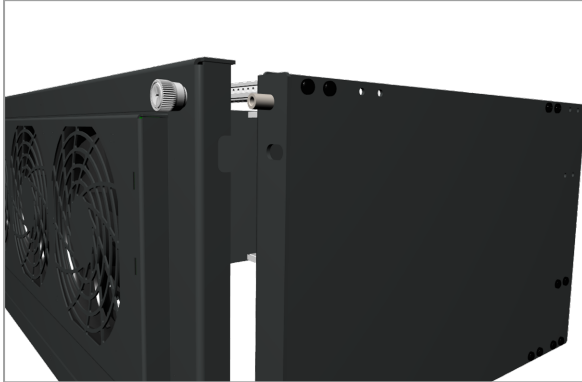
2. Connect the other end of the power cable to the fan cover.



## Fitting the fan cover to the chassis

The fan cover hangs on the side panels of the chassis. You don't need tools to attach the fan cover, but you can tighten the thumbscrews further with a screwdriver.

1. Position the fan cover over the tops of the side panels.



2. Tighten the thumbscrews.

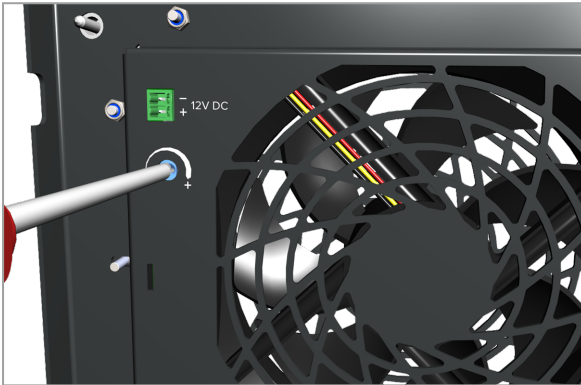
## Adjusting the speed of the fans

The fans inside the fan cover only spin at maximum speed when you have one or more ONERack modules connected to the internal power supply. If your internal power supply isn't connected to one or more modules, the fans spin at a lower speed.

You can also adjust the speed of the fans manually. Your fan cover arrives configured to run at full speed.

1. Remove the fan cover from the chassis.
2. Adjust the speed of the fans with a crosshead screwdriver.

To increase the speed, turn clockwise.



## Reversing the fans

You can reverse the fans so that they expel hot air instead of sucking in cool air.

For instructions on reversing the fans, see the video on the Videos tab at [tvone.com/onerack](http://tvone.com/onerack).

## Contact us

 tvone.com

 info@tvone.com

 **Support NCSA:** tech.usa@tvone.com

 **Support EMEA:** tech.europe@tvone.com

 **Support Asia:** tech.asia@tvone.com

Information in this document is subject to change without notice. No part of this publication may be reproduced, stored in a retrieval system, or transmitted in any form or any means electronic or mechanical, including photocopying and recording for any purpose other than the purchaser's personal use without the written permission of tvONE.

Copyright © 2019 tvONE™. All rights reserved.

Registered in the U.S. Patent and Trademark Office.

# CAPTIVATE your AUDIENCE



The  
best technology  
for creating  
eye-catching  
visual experiences



We Engineer Confidence