

MAGENTA
by tvONE

PATHFINDER SERIES



High performance KVM over IP

The ultimate solution with zero latency,
true 4K60 performance and easily
scalable to thousands of endpoints.



tvONE supports breast cancer
research by making a donation
for each unit sold.

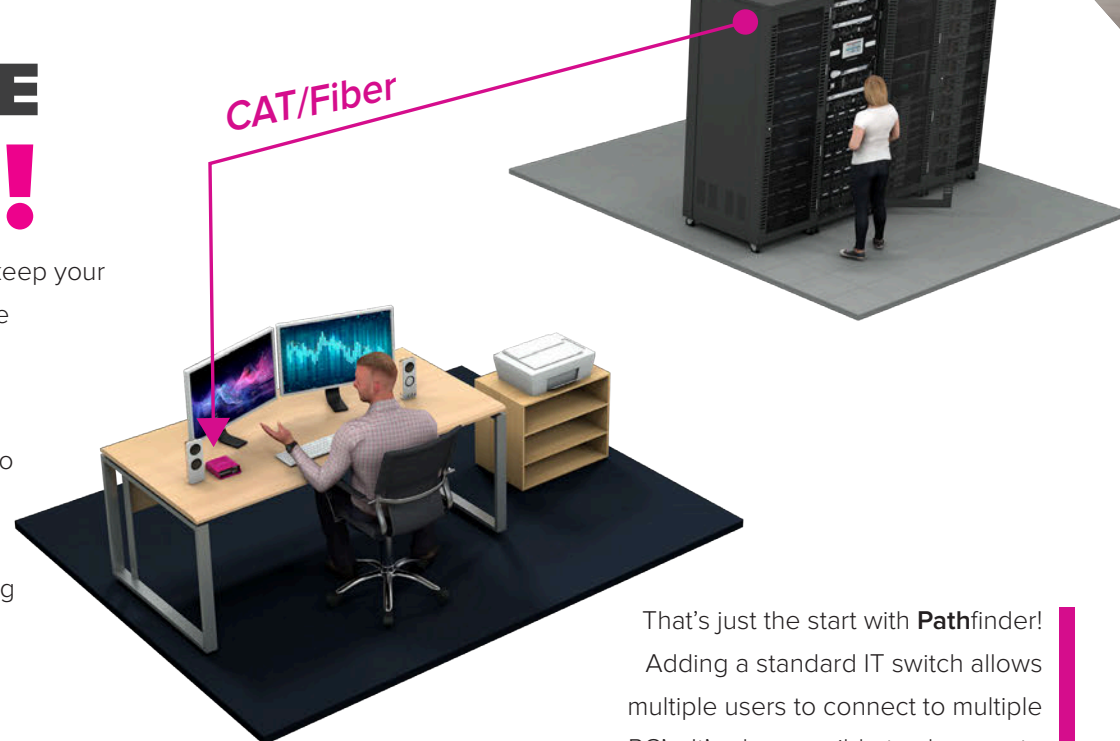
HOW CAN ANYONE WORK LIKE THIS?



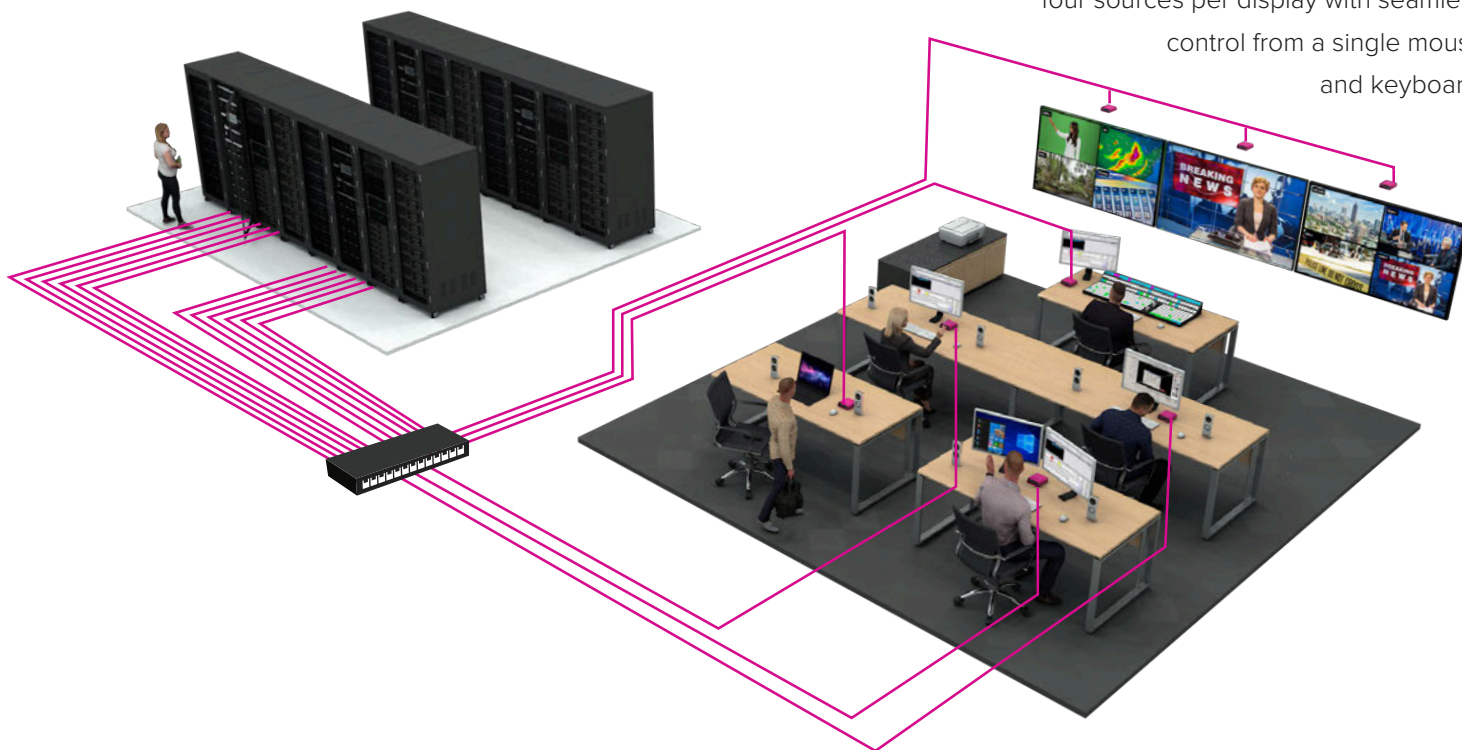
CHOOSE KVM!

Improve efficiencies and keep your PC's safe and secure while de-cluttering your work environment.

Move hot and noisy PC's to the machine room with fully transparent USB connectivity for file copying and support for extended desktops.



That's just the start with **Pathfinder!** Adding a standard IT switch allows multiple users to connect to multiple PC's. It's also possible to show up to four sources per display with seamless control from a single mouse and keyboard.



KVM OVER IP

Redefined by **Magenta Research®**

- Plug and play set up
- 4K KVM extension & switching
- Zero latency performance
- HDCP 1.4 compliant
- Fully transparent USB 2.0
- Uses standard IT networking switches
- Fanless encoders and decoders



Cross-Click

Boost ergonomics by controlling several PC's with just one mouse and keyboard



WindowView

View and control up to 16 PC's on 4K displays. View any source full screen in an instant



Zero Latency

No mouse lag or switching delay in any mode - guaranteed!



Security

Prevent unauthorized access, create user groups and individually defined access



Multi-Head Desktops

Experience the freedom of extended desktops over KVM



Easy Configuration

Quick set up for up to 3,000+ end points



Reduced Cost

No licensing fees, no hard to manage keys or costly control servers



Scalable

Create new workflows in single rooms, multiple floors or whole campuses



Flexible Control

Choose from an OSD, hot keys or control software

Industry Applications

Pathfinder is the perfect solution wherever performance and image quality matters.



Theme Parks

With security being the number one priority, your KVM system must offer real time monitoring across thousands of points of access while offering secure access control and mission critical redundancy.



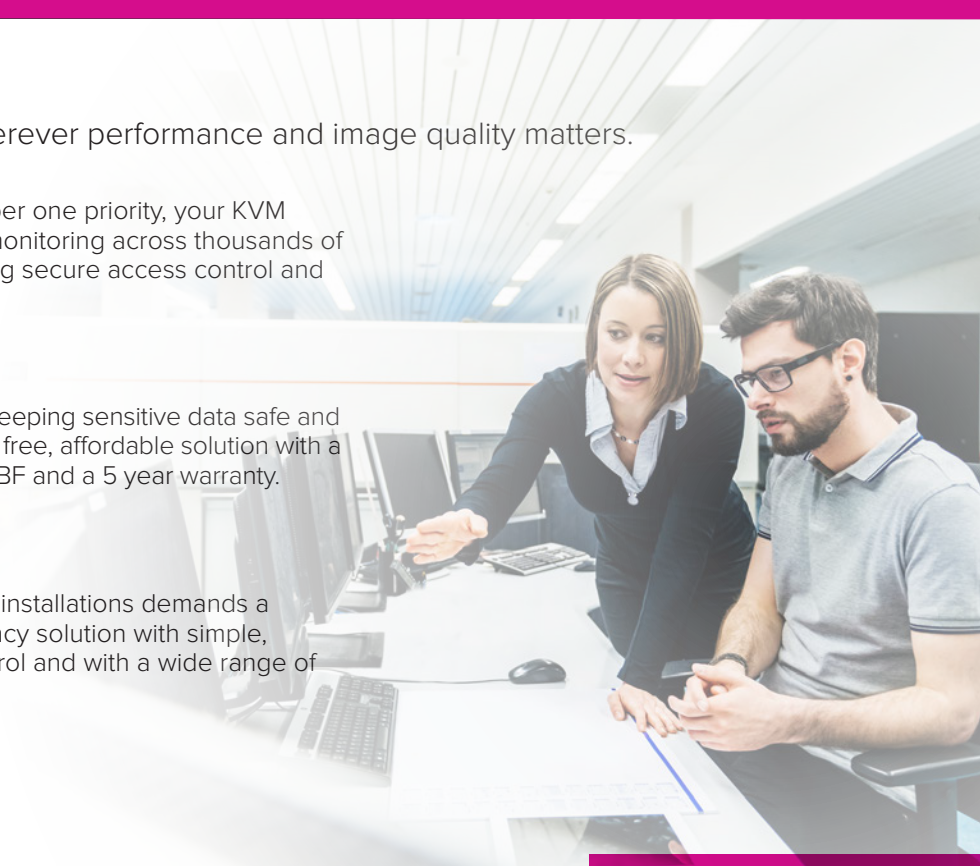
Corporate

Collaborate effectively while keeping sensitive data safe and secure. **Pathfinder** is a license free, affordable solution with a class-leading 89,000 hour MTBF and a 5 year warranty.





Live Events

KVM for live events and fixed installations demands a highly dependable, zero-latency solution with simple, reliable remote operator control and with a wide range of supported input types.



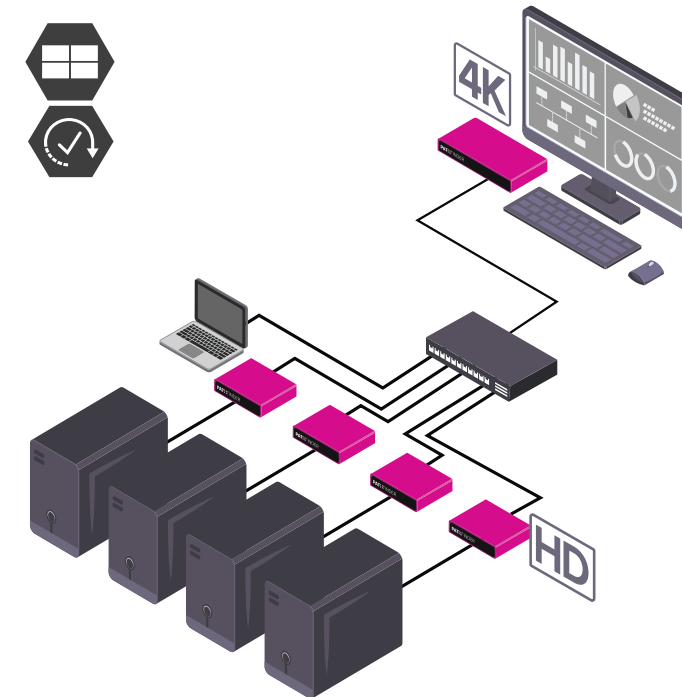
Welcome to ultra-high performance KVM over IP

Mix and match source resolutions using our transmitters and receivers for HD and 4K workflows over CAT or Fiber. Create the solution that you need from small point to point systems, right up to large matrix switching solutions with up to 3,000+ endpoints.

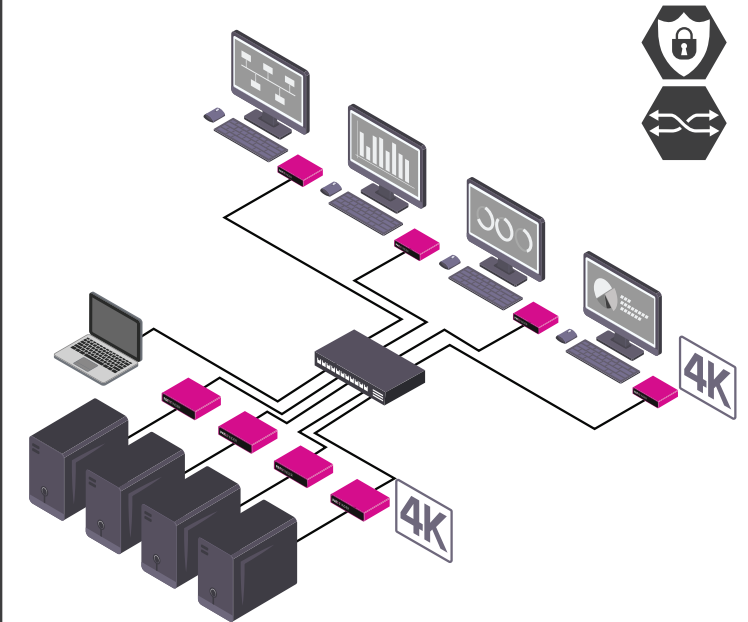
Pathfinder 800 series DisplayPort 1.2		Pathfinder 500 series DVI-I, HDMI & VGA
	Encoder Decoder	
KVM and transparent USB 2.0 over fiber or CAT	Capability	KVM and transparent USB 2.0 over fiber or CAT
DisplayPort 1.2	Inputs outputs	DVI-I and VGA
4096x2160 @ 60Hz 4:4:4 24bit	Max Resolution	1920x1200 @ 60hz with HDCP 1.4
10km	Max Distance	20km
10G	Network	1G

Connect and control multiple PC's using a single display

Connect and collaborate using a standard IT switch

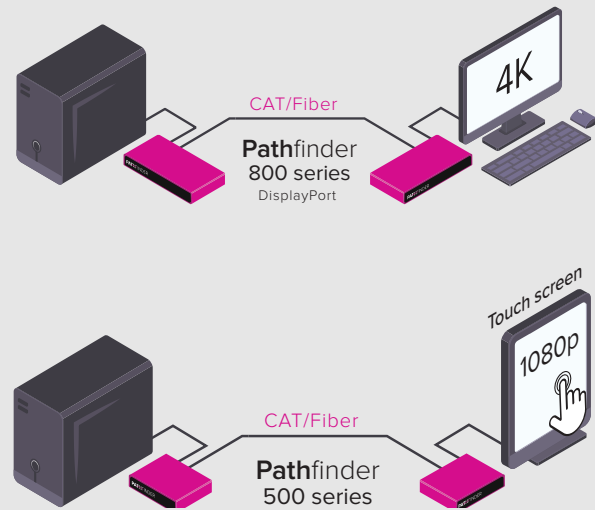


WindowView allows space saving with easy monitoring and control. Manage up to four PC's from a single 4K monitor; while using only a single keyboard and mouse to control the PC of your choice. Going full screen is simple. One keystroke will make the source you are hovering over fill the 4K screen. If you want to go large, link up to sixteen sources across four displays.



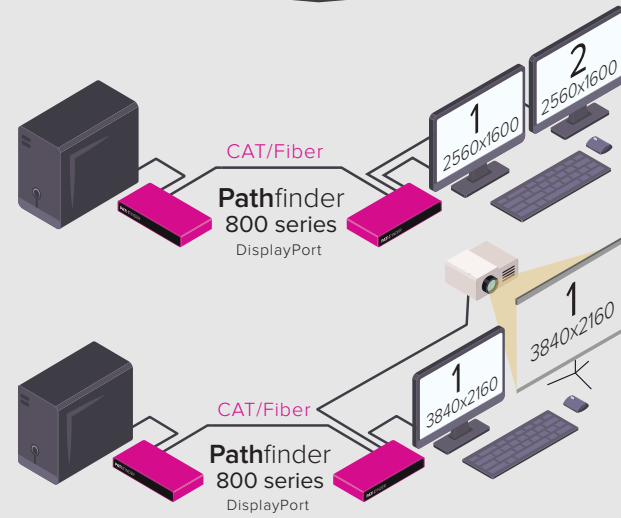
Pathfinder 500 and 800 series endpoints can be integrated into a large matrix system using standard networking switches. Switching between PC's is easily achieved using an On Screen Display (OSD) menu, user definable hot keys or with our intuitive Pathfinder Control software.

Connect point to point



Experience an optimized KVM over IP with resolutions up to 4K/60 4:4:4 and up to 20km with fully transparent USB 2.0 connectivity.

Connect dual screens



Deploy extended desktops with Pathfinder using DVI-I or DisplayPort. The Pathfinder 800 series has a built in MST (Multi Stream Transport) splitter for efficient deployments.



MAGENTA
PATHFINDER
control

Flexible Control Options

Pathfinder is packed to the brim with choices for how you want to take control to match, simplify and enhance your workflows. In addition to a smart OSD (On Screen Display), user-definable hot keys and **Pathfinder Control** software, other highly intuitive options include **Cross-Click** and **WindowView**.

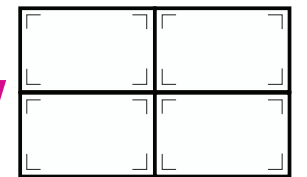
Cross-Click

Using **Cross-Click** it's easy to forget that you are working on multiple PC's, since there is no mouse lag whatsoever.

Simply glide your mouse cursor from screen to screen for ultra-slick workflows even in the most pressurized environments, with no additional hardware.



WindowView



View and control up to 4 computers on a 4K display with zero latency.

Combining **WindowView** with **Cross-Click**, it's possible to control up to 16 PC's across up to four displays.



On Screen Display

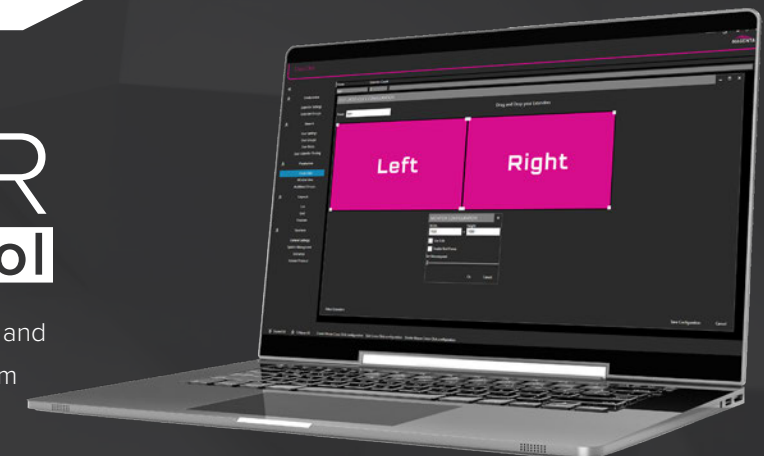
User settings can also be made available and adjusted at the desktop.

Hot Keys

User definable key strokes allow smooth workflows.

MAGENTA PATHFINDER control

Configure and control up to 3,000+ Pathfinder encoders and decoders. Connect, disconnect or configure using System Administrator or User level access.



Companion Products



Videowall Processor Family



CORIOmaster

Create the ultimate multi-window video experience for your small, medium and large video walls and LED installations without compromise.

4K Multi-Window Processor



CORIOview

Multi-window processor with up to 8 sources, plug-and-play set up and 16 buttons for preset recall or source selection making usability a breeze.

HD Multi-Window Processor



C2-6104A

Quad Window DVI multiviewer with five inputs including one for cascading or background usage.

Power Supply



P2-105

Simplify your installs with 12 Volt power distribution to replace up to five 12VDC adapters.*

Racking Solution



ONERack

Vastly improve the rack installation of Pathfinder encoders and decoders with integrated mounting, powering, cooling and cable management.

Shelf Mount



RM-220

Easily mount up to 4 encoders or decoders on this 1RU rack mount shelf.

* 500 series only